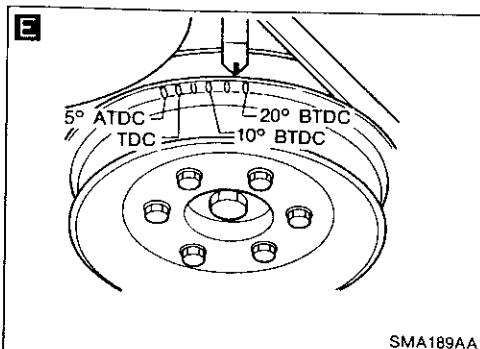
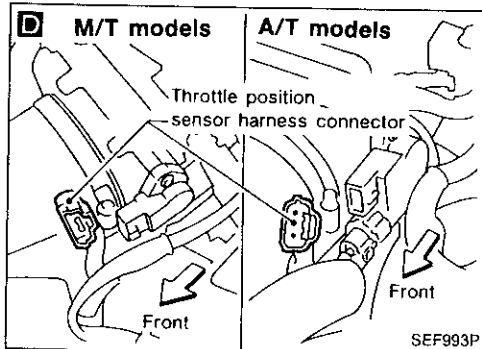
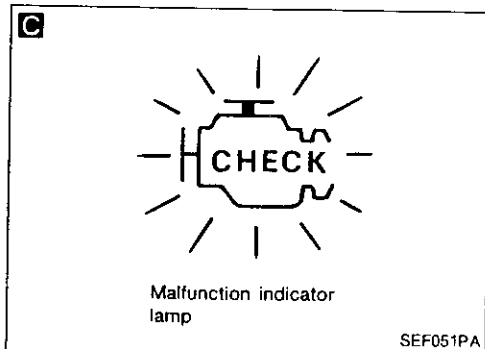
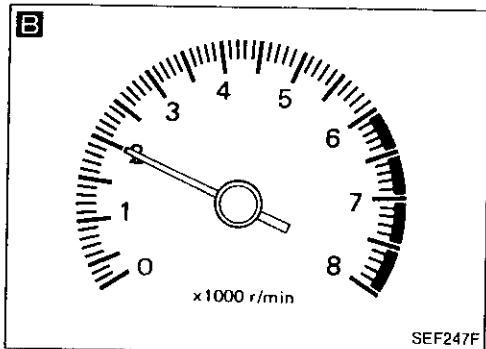
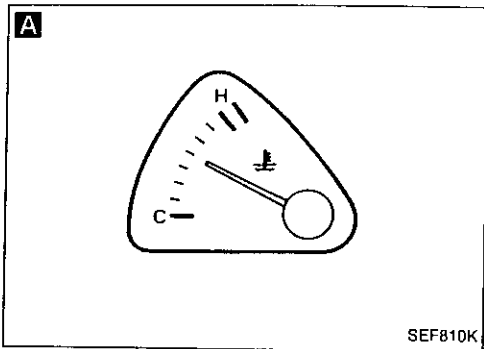


# IDLE SPEED/IGNITION TIMING/IDLE MIXTURE RATIO INSPECTION



START

Visually check the following:

- Air cleaner clogging
- Hoses and ducts for leaks
- EGR valve operation
- Electrical connectors
- Gasket
- Throttle valve

**A** Start engine and warm it up until engine coolant temperature indicator points to the middle of gauge. Ensure that engine speed is below 1,000 rpm.

**B** Open engine hood and run engine at about 2,000 rpm for about 2 minutes under no-load.

**C** Perform diagnostic test mode II (Self-diagnostic results).

OK → [ ]  
 NG → Repair or replace components as necessary.

Run engine at about 2,000 rpm for about 2 minutes under no-load. Race engine two or three times under no-load, then run engine for about 1 minute at idle speed.

**D**

1) Select "IGNITION TIMING ADJ" in WORK SUPPORT mode.  
 2) Touch "START".

1) Stop engine and disconnect throttle position sensor harness connector.  
 2) Start engine.

Race engine two or three times to about 2,000 rpm under no-load. Then run engine at idle speed.

**E** Check ignition timing with a timing light.  
**15° ± 2° BTDC**

OK → [ ]  
 NG → Adjust ignition timing by turning camshaft position sensor after loosening securing bolts.

Ⓐ