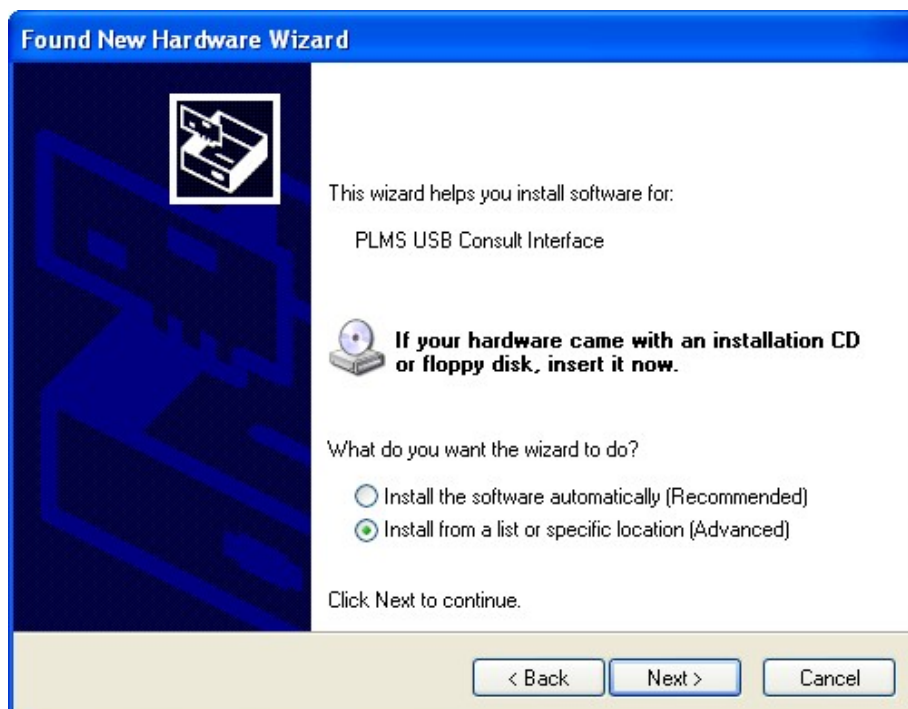


NOTE: It is essential that the correct drivers are installed. Generic windows USB drivers are not suitable. Do not allow windows to connect to the internet to search for drivers.

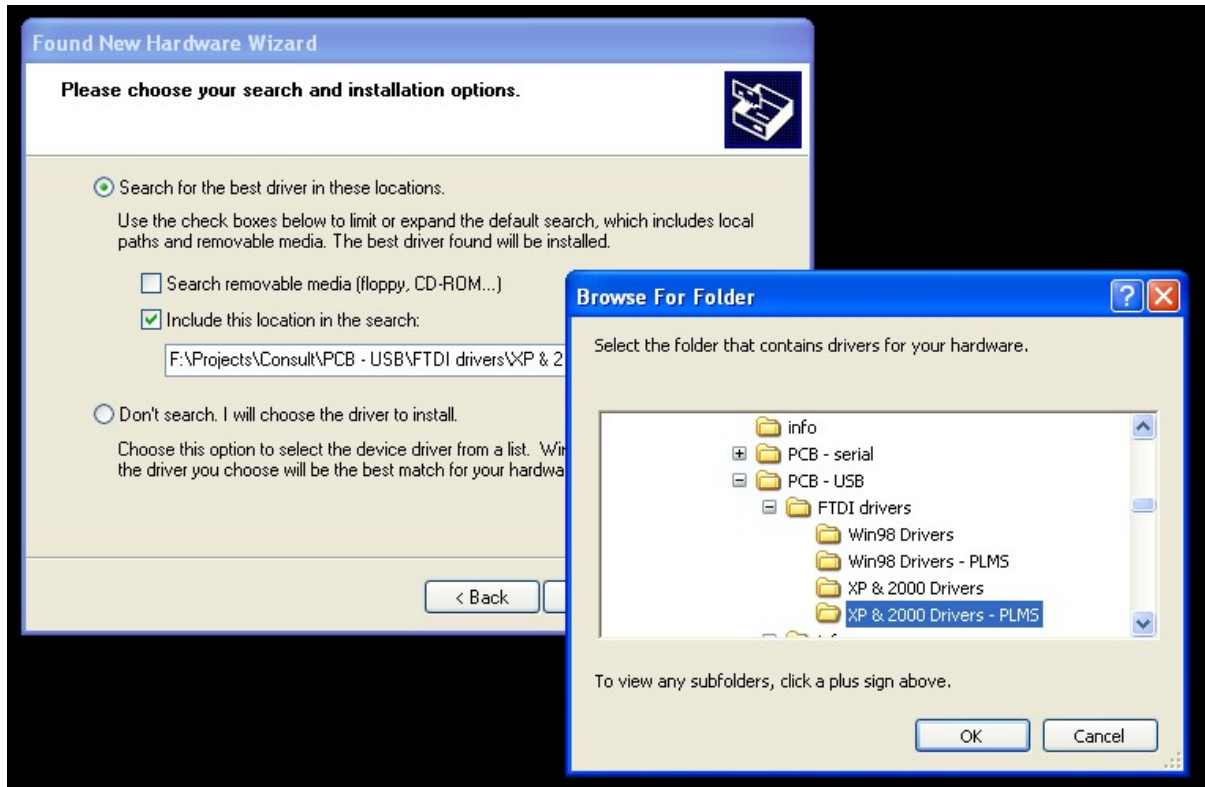
- 1) Save the driver files and unzip them to a known location on your computer. It's best to create a new folder as there are multiple files created.
- 2) Plug the Consult cable into the USB port – the New Hardware Wizard will start. Tell windows not to search.



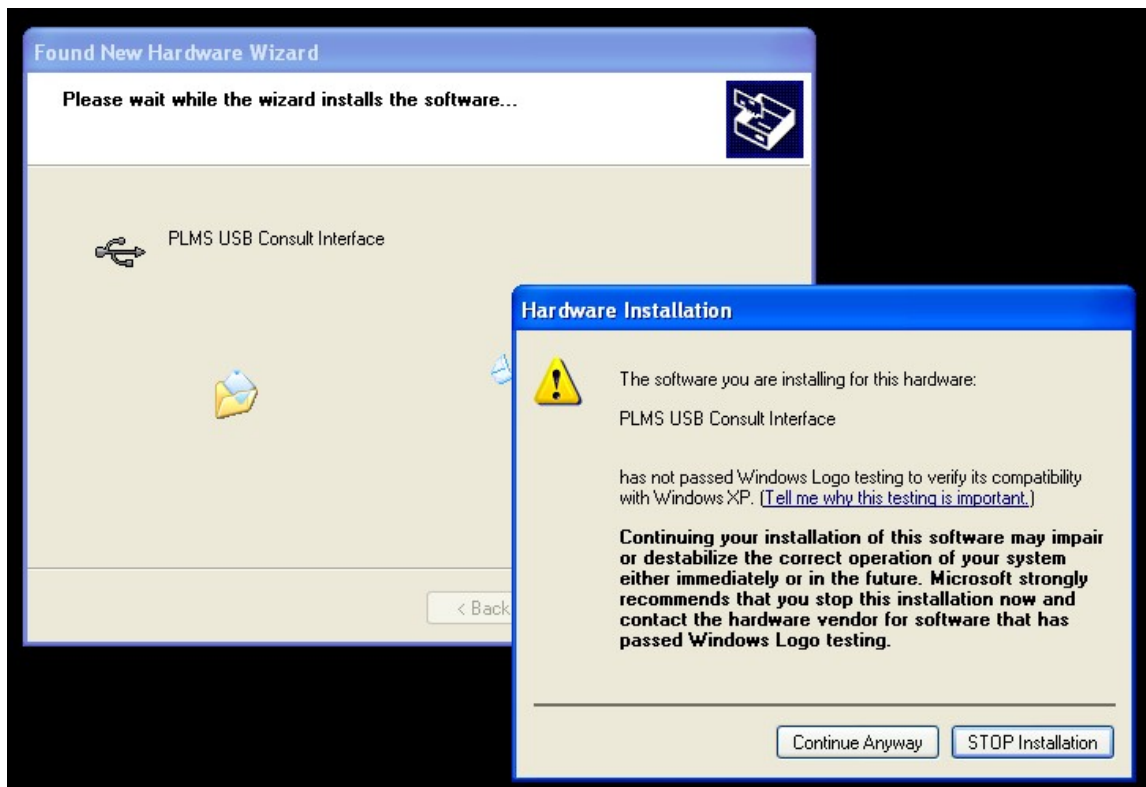
- 3) Select "Install from a specific location".



4) Browse to where you saved the drivers.



5) Allow the wizard to do its thing. Select "Continue Anyway" when it complains about Windows logo testing.



- 6) When Windows has finished copying all the driver files the following message should appear.



- 7) This driver install procedure (steps 2 to 6) **will happen twice**. When it completes the second time you should see the following message on your task bar:



- 8) You can check which port has been assigned by going Control Panel, System, Hardware, Device Manager. Expand the "Ports (COM & LPT)" tab and you should see "PLMS USB Consult Interface (COM9)".

